

LX 200



LX 200
LX 200 LLX200
가

• / /

•

•

•

(PC)

• **Uniformity**

min/ave

• ***As per following standards :**

NF EN 12464-1 – Lighting of workplaces (inside)

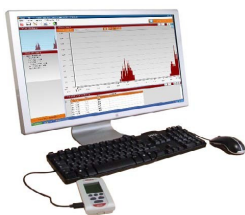
NF EN 12464-2 – Lighting of workplaces (outside)

NF EN 12193 – Lighting of sports facilities

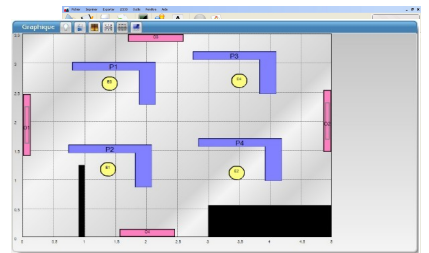
• LLX 200

SET

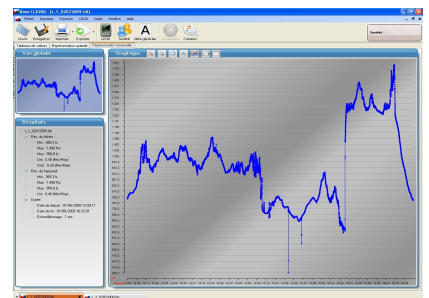
SET ()



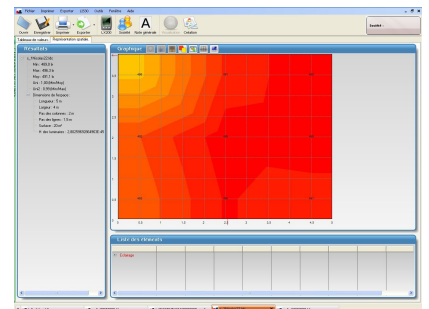
Determination of the illuminance uniformity of a local with graphic representation of workstations and luminaries



Following temporal evolution of illuminance of a workstation or a journey



Illuminance cartography with coloured nuance of a workstation (sports facilities)



◆ 0.1 ~ 200000 Lux

Range	Unit	Resolution	Accuracy
0.1 ~ 10.0	lx	0.1	0.1 lux
10.0 ~ 99.9	lx	0.1	1%
100.0 ~ 999.9	lx	0.1	1%
1000 ~ 9999	lx	1	1%
10.00 ~ 99.99	klx	10	1%
100.0 ~ 200.0	klx	100	1%

◆ 0 ~ 18585 fc

Range	Unit	Resolution	Accuracy
0.00 ~ 1.00	fc	0.01	0.01 fc
1.00 ~ 99.99	fc	0.01	1%
100.0 ~ 999.9	fc	0.1	1%
1000 ~ 9999	fc	1	1%
10.00 ~ 18.58	kfc	10	1%

- LX 200 (&)
- 3 LR 3-AAA
- LLX200

- (5m)
- (5)
- AC (USB)

LX200 COFRAC

가

..... 0.1 ~ 200000 Lux
 0.01 ~ 18585 fc
 : as per standard photopic curve
 V(λ) NF C 42 -710
 Class B

- Error limit V(λ) (f1)** < 6%
- True cosine evaluation (f2)** < 6%
- Linearity (f3)** < 5%
- Measurement capability*** from 04h30 to 99 days
- Display** backlit LCD graphic 128x64.
- Working temperature** from 0°C to +50°C
- Storage temperature** from 0°C to +50°C
- Housing dimensions (without sensor)** 120 x 58 x 34 mm
- Weight (housing+sensor+battery)** 185 gr
- Mini-USB plug** for USB power supply adapter and data transfer
- Power supply** 3 batteries 1.5V type LR3-AAA
- Autonomy** 72 hours minimum, continuous operation
- Electromagnetic compatibility** according to 89/336/CEE
- Conformity** as per RoHS

**according to the mode (uniformity, temporal or cartography)*

